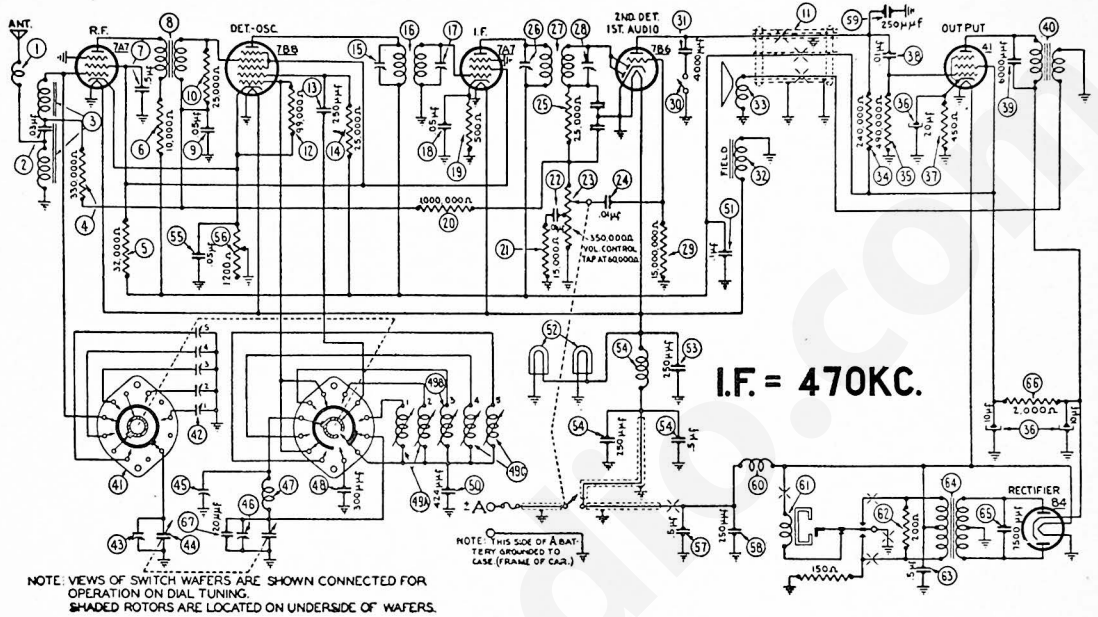


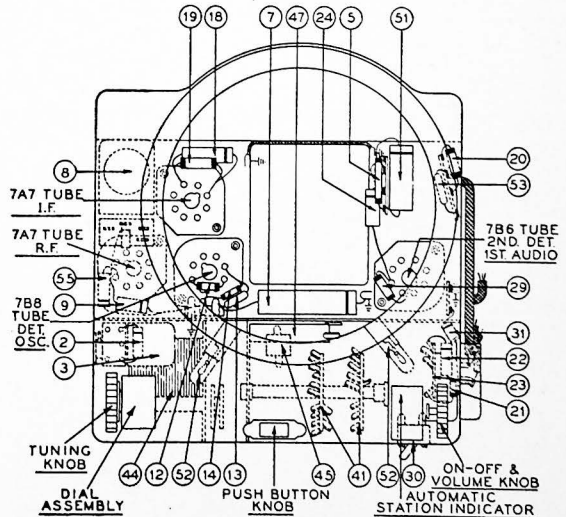
MODEL F-1641



Aligning Procedure will be found on page 174.

PARTS LIST

No.	Description	Part No.	No.	Description	Part No.
①	Antenna Choke	65-0197	③	Condenser (.01 mfd.)	30-4501
②	Condenser (.03 mfd.)	61-0064	④	Condenser (8,000 mmfd.)	61-0052
③	Antenna Transformer	65-0190	⑤	Output Transformer	65-0180
④	Resistor (330,000 ohms)	33-432327	⑥	Wafer Switch Assembly	77-0363
⑤	Resistor (32,000 ohms)	33-332437	⑦	Antenna Padder Assembly	77-0292
⑥	Resistor (10,000 ohms)	33-310237	⑧	First Padder (on Tun. Cond.)	63-0026
⑦	Condenser (.5 mfd.)	30-4565	⑨	Tuning Condenser	63-0026
⑧	R. F. Transformer	65-0189	⑩	Low Frequency Padder	63-0031
⑨	Condenser (.05 mfd.)	30-4444	⑪	Second Padder (on Tun. Cond.)	63-0031
⑩	Resistor (25,000 ohms)	33-325244	⑫	Oscillator Transformer	65-0007
⑪	Power Cable	95-0091	⑬	Silver Mica Condenser (300 mmfd.)	61-0003
⑫	Resistor (99,000 ohms)	33-399237	⑭	Oscillator Transformer (1-2)	65-0198
⑬	Condenser (250 mmfd.)	61-0034	⑮	Oscillator Transformer (3)	65-0199
⑭	Resistor (25,000 ohms)	33-325347	⑯	Oscillator Transformer (4-5)	65-0200
⑮	Padder (Pri. 1st I. F. Trans.)	65-0177	⑰	Silver Mica Condenser (424 mmfd.)	61-0067
⑯	Padder (Sec. 1st I. F. Trans.)	65-0178	⑱	Condenser (.1 mfd.)	30-4455
⑰	Condenser (.05 mfd.)	30-4569	⑲	Pilot Lamp	34-2040
⑱	Resistor (500 ohms)	33-150438	⑳	Condenser (250 mmfd.)	61-0033
⑲	Resistor (1,000,000 ohms)	33-510237	㉑	"A" Filter Assembly	77-0333
⑳	Resistor (15,000 ohms)	33-315237	㉒	Condenser (.05 mfd.)	30-4569
㉑	Condenser (.01 mfd.)	30-4479	㉓	Sensitivity Control	33-5248
㉒	Volume Control (350,000 ohms) and on-off switch	67-0018	㉔	Condenser (.5 mfd.)	30-4565
㉓	Condenser (.01 mfd.)	30-4479	㉕	Condenser (250 mmfd.)	61-0033
㉔	Resistor (25,000 ohms)	33-325344	㉖	Condenser (250 mmfd.)	61-0033
㉕	Padder (Pri. 2nd I. F. Trans.)	65-0177	㉗	Vibrator Choke	65-0204
㉖	Second I. F. Transformer	65-0178	㉘	Vibrator	41-3398
㉗	Padder (Sec. 2nd I. F. Trans.)	65-0178	㉙	Resistor (200 ohms)	33-120337
㉘	Resistor (15,000,000 ohms)	33-615247	㉚	Condenser (.5 mfd.)	30-4565
㉙	Tone Control Switch	65-0093	㉛	Power Transformer	65-0179
㉚	Condenser (4,000 mmfd.)	30-4456	㉜	Condenser (7500 mmfd.)	30-4567
㉛	Field Coil	Not Replacable	㉝	Resistor (2,000 ohms)	33-220537
㉜	Cone Kit	91-0070	㉞	Condenser (20 mmfd.)	30-1039
㉝	Padder (240,000 ohms)	33-424337	㉟	Loktal Socket	65-0575
㉞	Resistor (490,000 ohms)	33-449247	㊱	Socket	65-0481
㉟	Filter Condenser (15,000,000 ohms)	33-510237	㊲	Drive Cord	65-0428
㊱	Condenser (10-10-20 mfd.)	61-0028	㊳	Tuning and Volume Knob	65-0428
㊲	Resistor (450 ohms)	33-146438	㊴	Push Button Knob	65-0196
㊳			㊵	Dial Assembly (Manual)	65-0091



No.	Description	Part No.	No.	Description	Part No.
77-0302	Station Indicator (Automatic)		37-0772	Manual Bezel	
37-0773	Indicator Bezel		37-0375	Push Button Bezel	